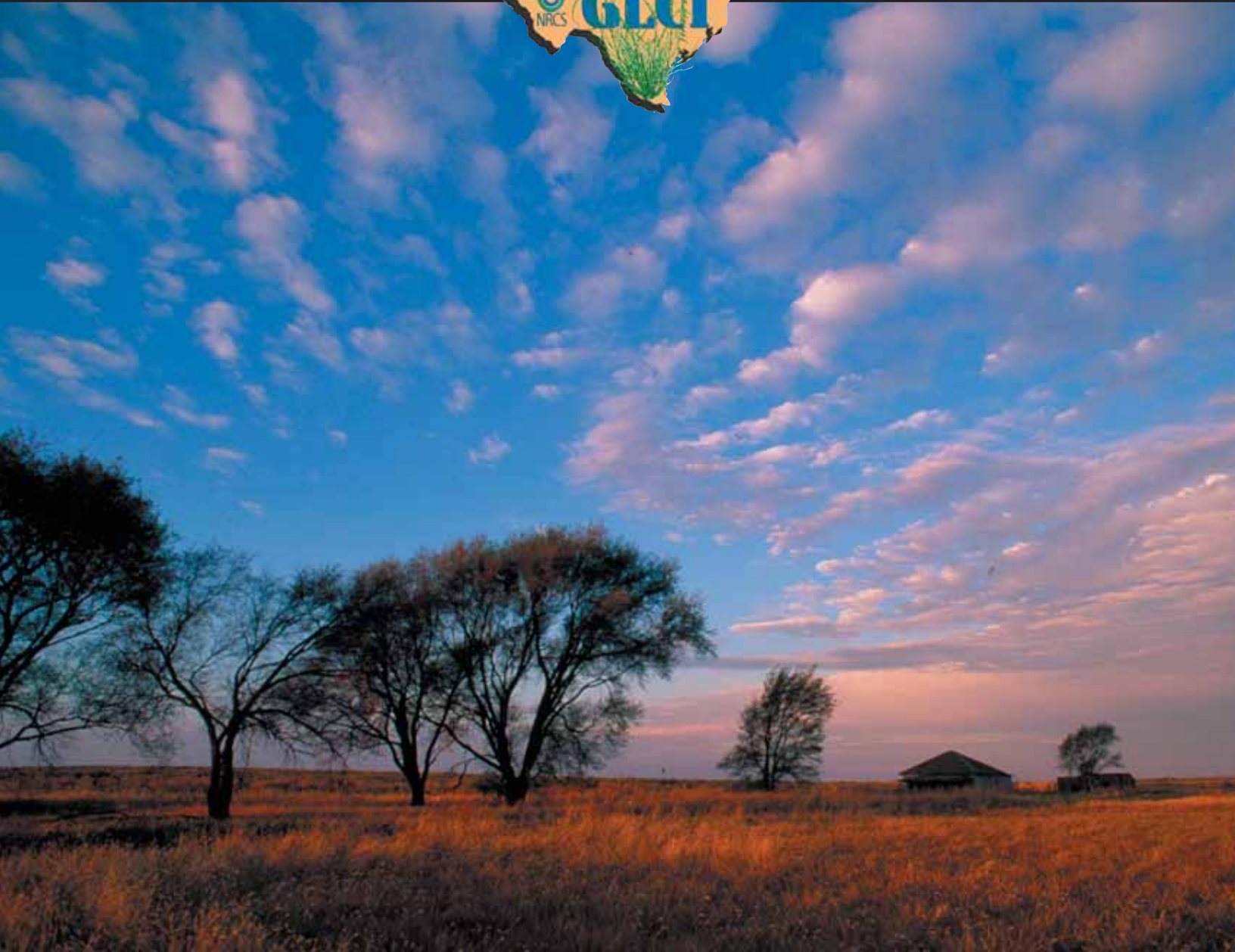
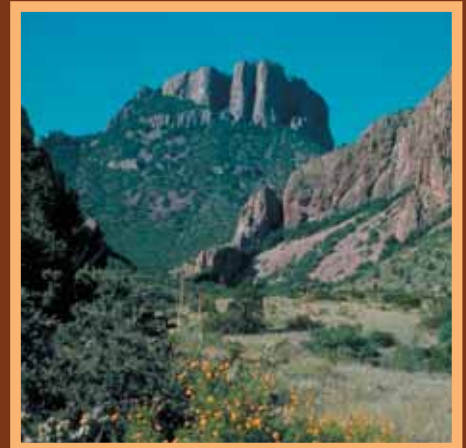




Grazing Lands Conservation Initiative *in Texas*



66% of Texas is grazing land...



...and that affects 100% of all Texans.

Why? Because grazing lands are the primary source for clean air, pure water, wildlife habitat and our food supply.

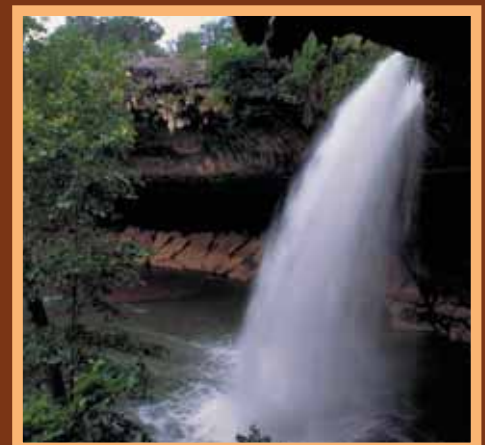
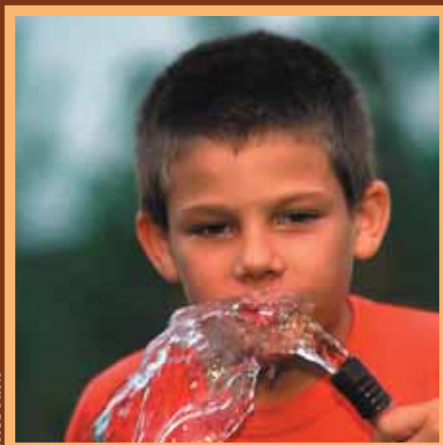
The stewards of Texas grazing lands have a big job - and they know it. That's why they depend upon the Grazing Lands Conservation Initiative (GLCI) in Texas. The Texas GLCI works closely with the USDA Natural Resources Conservation Services (NRCS)

to provide grazing lands specialists to carry out its mission of maintaining or improving private grazing land resources.

The GLCI is an organization of land owners, biologist, range management specialists, wildlife groups, producer groups, environmental groups and others. Their combined expertise provides a forum for research, discussion and promotion of the health and well-being of Texas

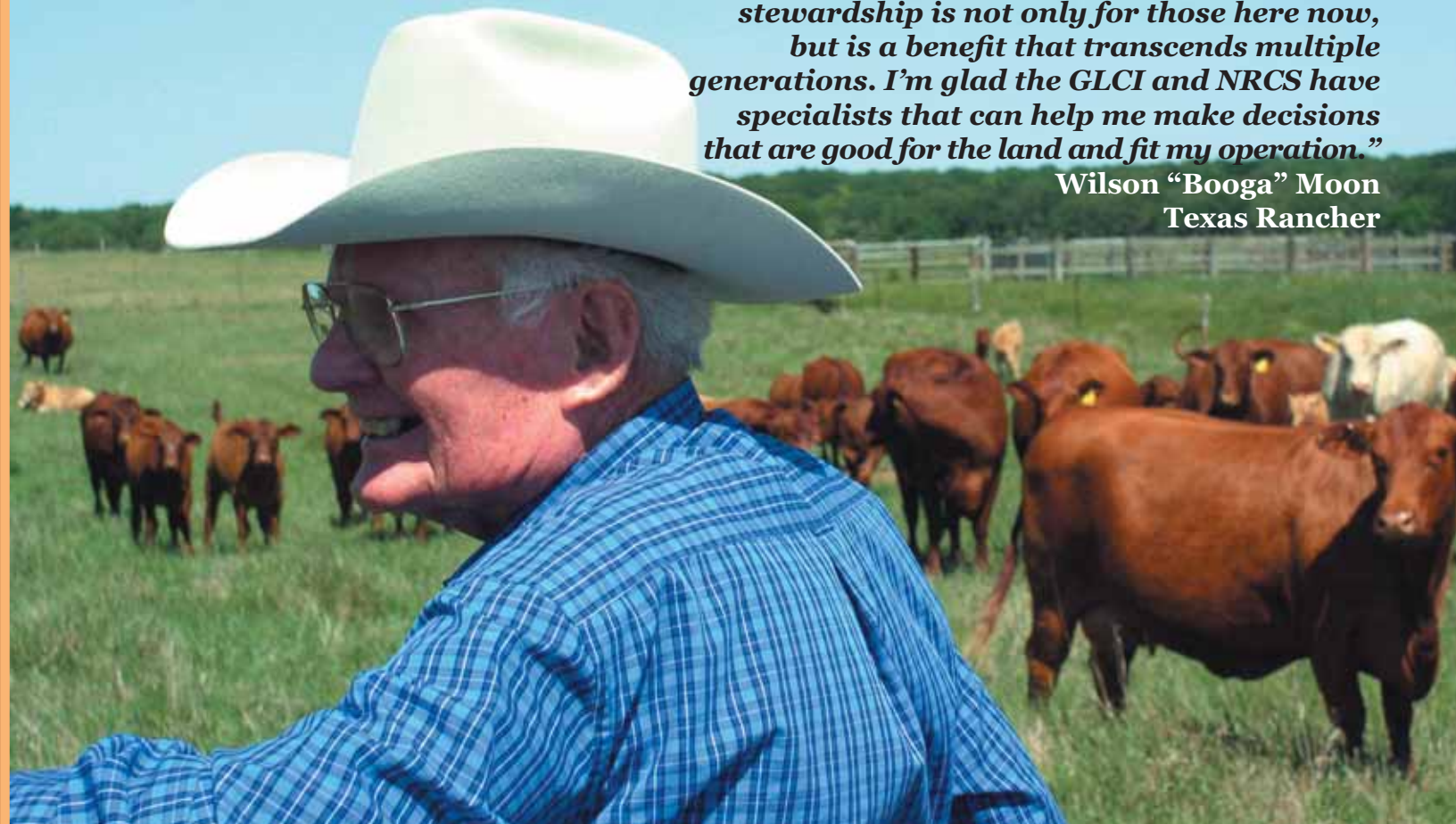
grazing lands.

The Texas GLCI is committed to a voluntary approach to maintaining and improving the management, productivity, and health of privately owned grazing lands in the state. GLCI is a proponent of high-quality technical assistance, increased grazing lands research and education, a more informed and knowledgeable public, and private property rights.

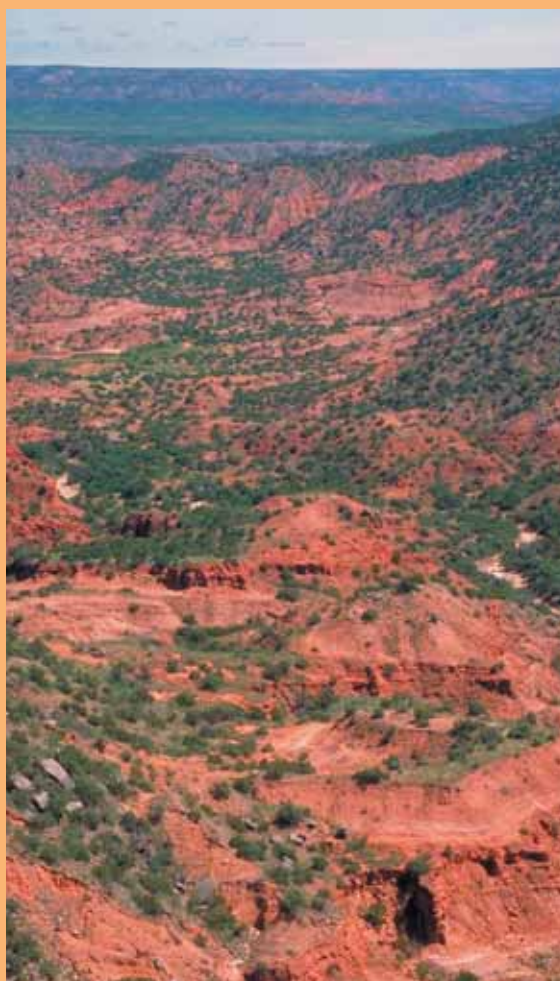


"I know the value of grazing lands stewardship is not only for those here now, but is a benefit that transcends multiple generations. I'm glad the GLCI and NRCS have specialists that can help me make decisions that are good for the land and fit my operation."

**Wilson "Booga" Moon
Texas Rancher**



NRCS Photo



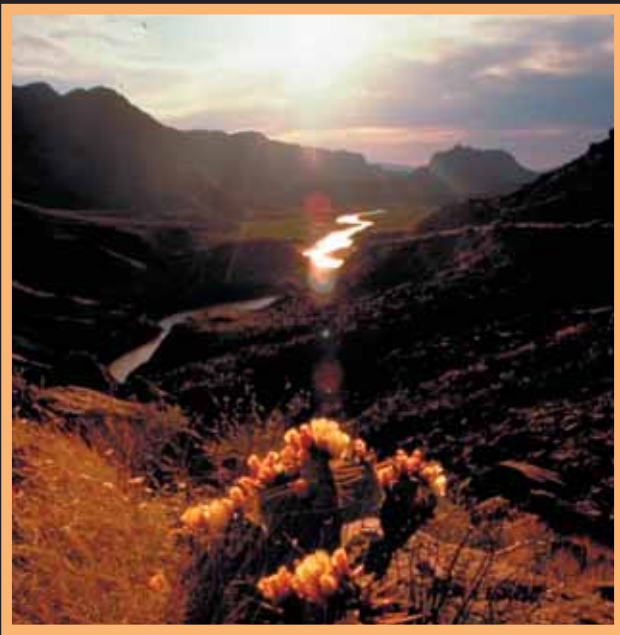
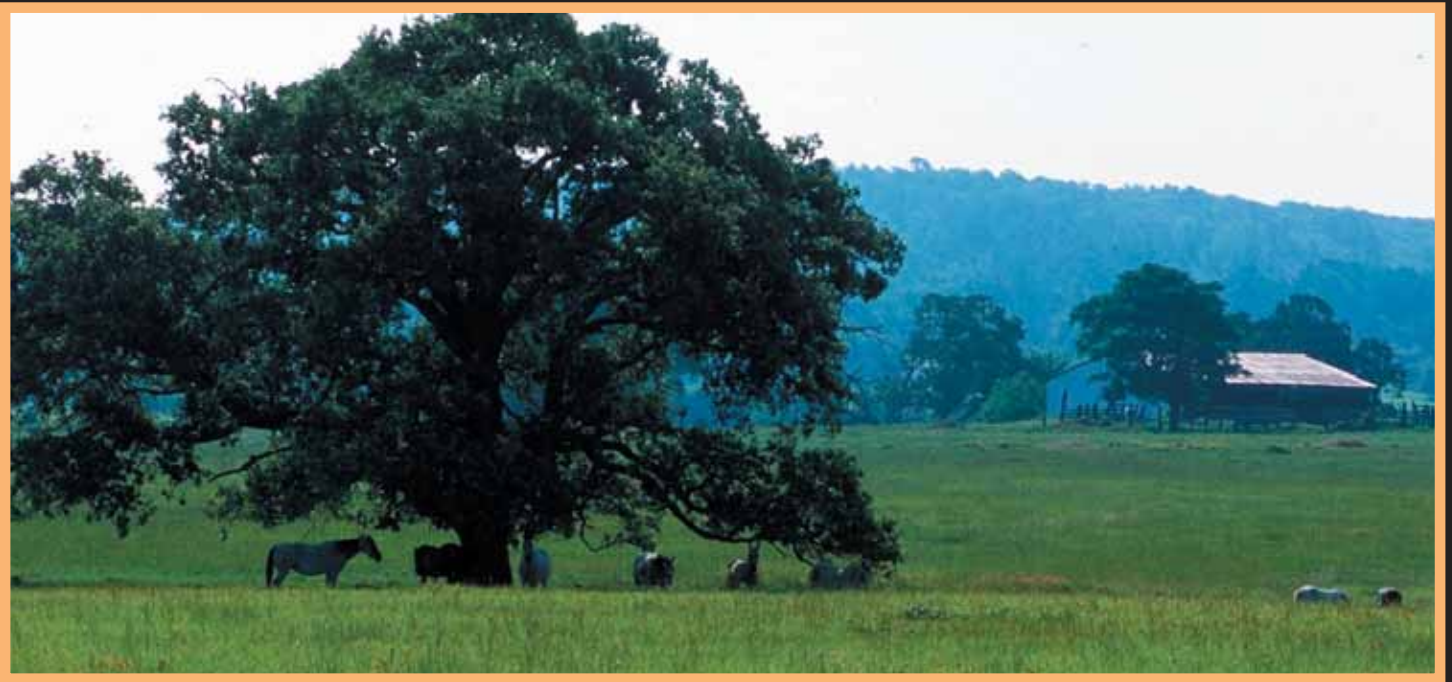
"GLCI is an organization of people with a common goal: effective management of privately owned grazing lands."



Growing Partnerships.



NRCS Photo



If you have an interest in :

- ✓ **Clean Air**
- ✓ **Improved water quality and quantity**
- ✓ **An available supply of food and fiber**
- ✓ **Healthy wildlife populations and habitat**
- ✓ **Perpetuation of Texas native plants**
- ✓ **Protecting the land from wind and water erosion**
- ✓ **Habitat for threatened and endangered plants and animals**
- ✓ **Family-oriented business rich with traditions and history**
- ✓ **Open spaces and scenic vistas**
- ✓ **Recreational opportunities that annually contribute over 10 billion to Texas economy**

Then GLCI might be for you!

GLCI in Texas

Mark Moseley, GLCI Coordinator
 727 E. Durango Blvd., Suite A505
 San Antonio, Texas 78206
 210-472-5527, X117
 www.glci.org
 In partnership with:



The United States Department of Agriculture (USDA) prohibits discrimination in its programs on the basis of race, color, national origin, sex, religion, age, disability, political beliefs and marital or familial status. (Not all prohibited bases apply to all programs.)
 Persons with disabilities who require alternative means for communication of program information (Braille, large print, audiotape, etc.) should contact USDA's TARGET Center at (202) 720-2600 (voice and TDD).
 To file a complaint, write the Secretary of Agriculture, U.S. Department of Agriculture, Washington, D.C. 20250 or call 1-800-245-6340 (voice) or (202) 720-1127 (TDD). USDA is an equal employment opportunity employer.